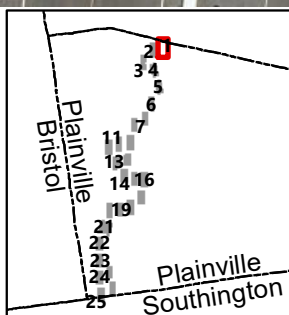


- Alignment C - 5.3 Miles - 98% Off Road
- Alignment C Alternatives
- 10-12' Bituminous multi-use trail
- Railroad



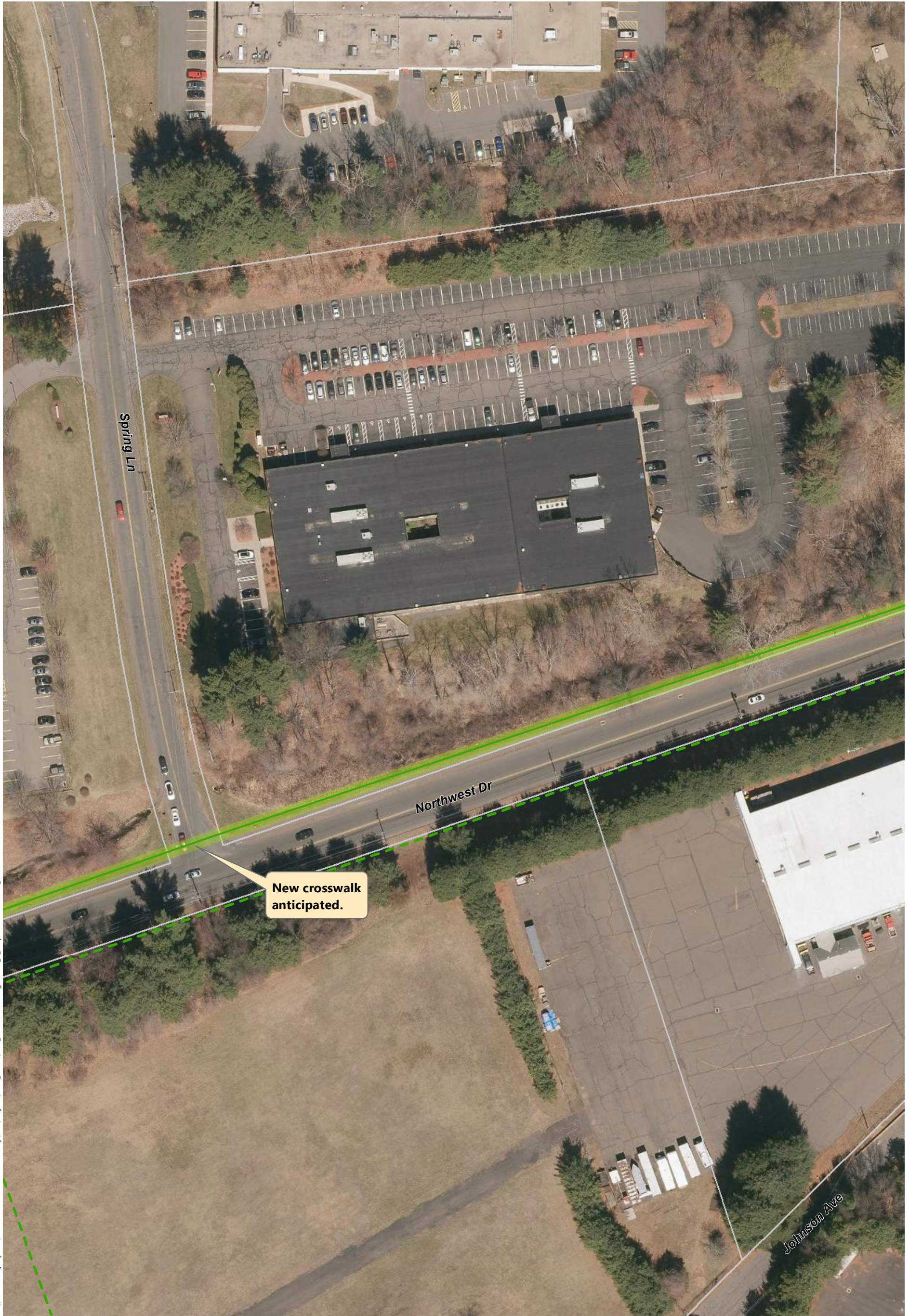
Gap Closure Trail Study

Hartford County, CT

Alignment C - 5.3 Miles

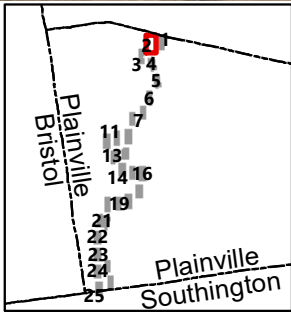
Disclaimer: The alignment shown is preliminary and for planning purposes only. Alignments are subject to change as the planning study progresses. Parcel lines have not been field verified.





0 25 50 100 Feet

- Alignment C - 5.3 Miles - 98% Off Road
- Alignment C Alternatives
- 10-12' Bituminous multi-use trail
- Railroad

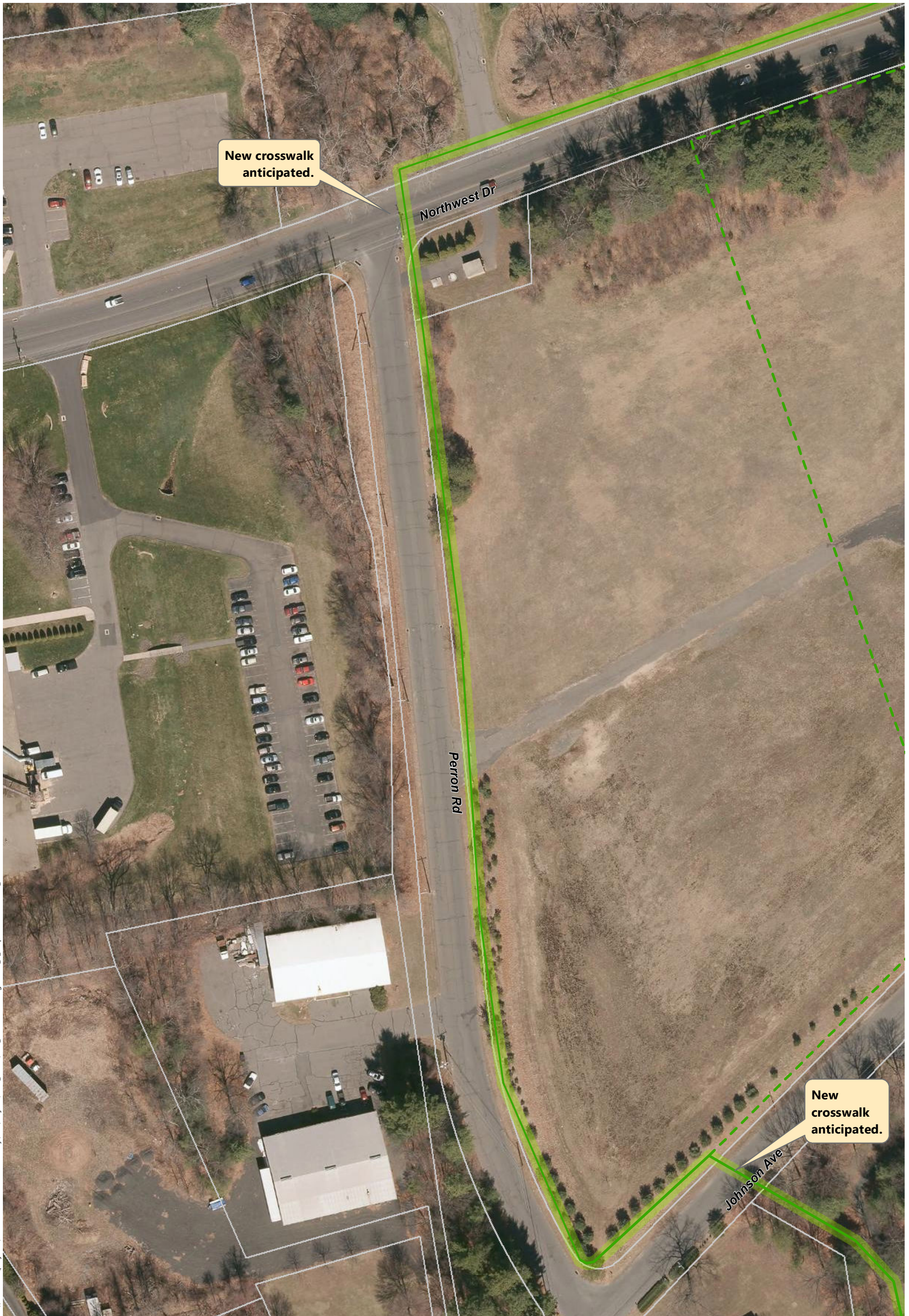


Gap Closure Trail Study | Hartford County, CT

Alignment C - 5.3 Miles

Disclaimer: The alignment shown is preliminary and for planning purposes only. Alignments are subject to change as the planning study progresses. Parcel lines have not been field verified.

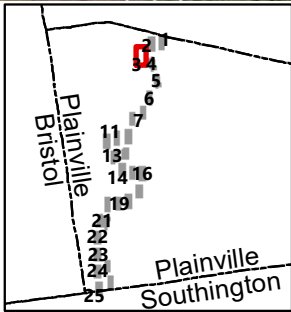




0 25 50 100 Feet

- Alignment C - 5.3 Miles - 98% Off Road
- Alignment C Alternatives
- 10-12' Bituminous multi-use trail
- Railroad

Disclaimer: The alignment shown is preliminary and for planning purposes only. Alignments are subject to change as the planning study progresses. Parcel lines have not been field verified.



Gap Closure Trail Study | Hartford County, CT

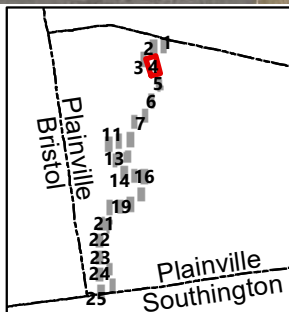
Alignment C - 5.3 Miles





0 25 50 100 Feet

- Alignment C - 5.3 Miles - 98% Off Road
- Alignment C Alternatives
- 10-12' Bituminous multi-use trail
- Railroad



Gap Closure Trail Study

Hartford County, CT

Alignment C - 5.3 Miles

Disclaimer: The alignment shown is preliminary and for planning purposes only. Alignments are subject to change as the planning study progresses. Parcel lines have not been field verified.

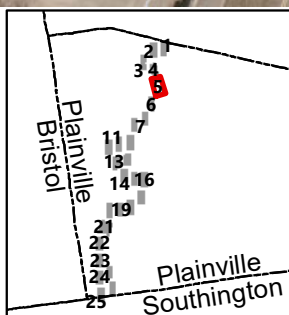




\\c:\mddat\projects\42201.00 Plainville Trail Study\GIS\Project\Final\_mxd\GCS\_NorthSouthAlignment\_C\_Mapbook\DueNorth\_.mxd

0 25 50 100 Feet

- Alignment C - 5.3 Miles - 98% Off Road
- Alignment C Alternatives
- 10-12' Bituminous multi-use trail
- Railroad

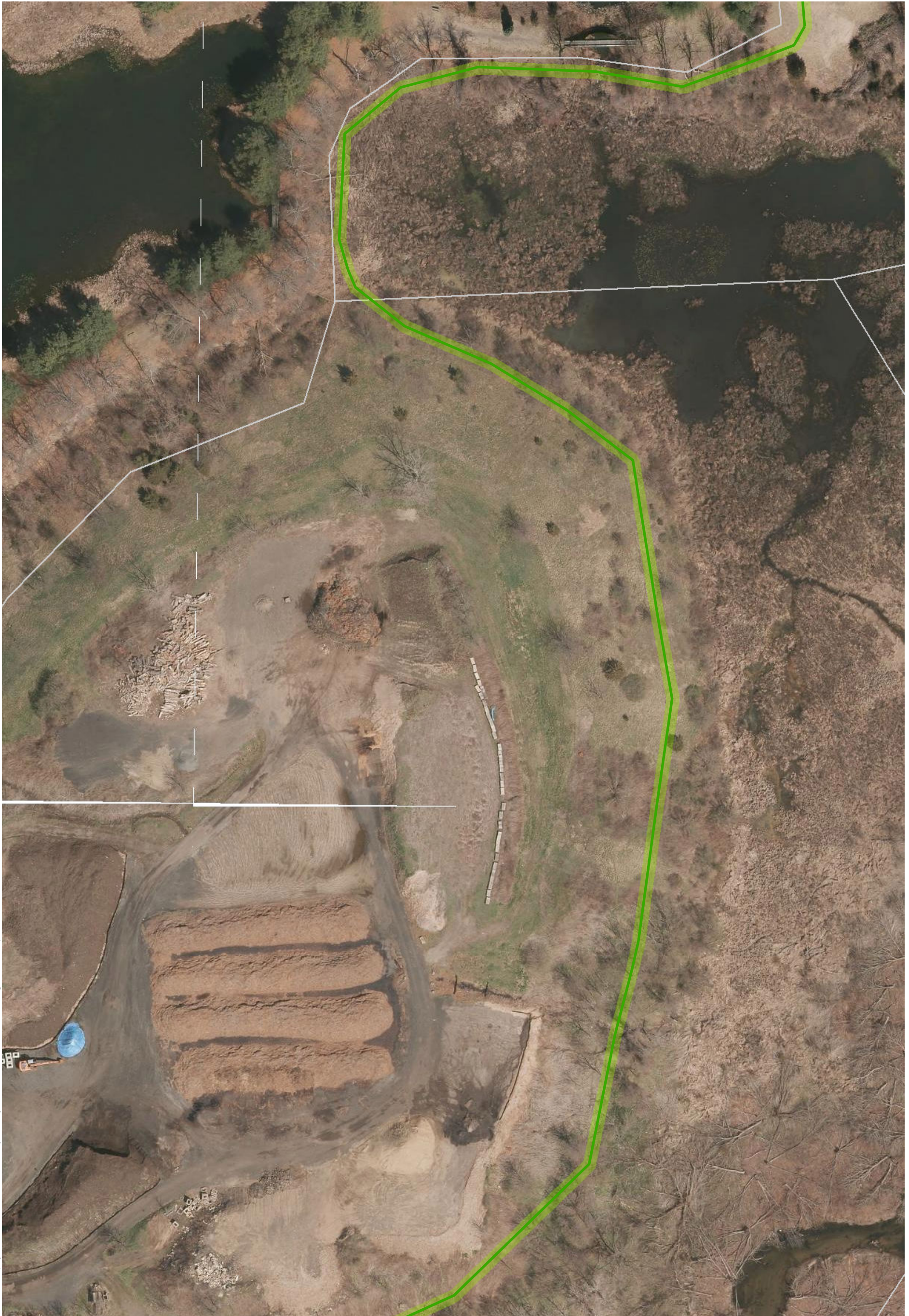


Gap Closure Trail Study | Hartford County, CT

Alignment C - 5.3 Miles

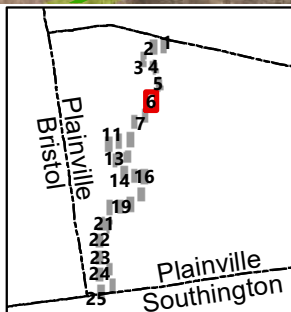
Disclaimer: The alignment shown is preliminary and for planning purposes only. Alignments are subject to change as the planning study progresses. Parcel lines have not been field verified.





0 25 50 100 Feet

- Alignment C - 5.3 Miles - 98% Off Road
- Alignment C Alternatives
- 10-12' Bituminous multi-use trail
- Railroad

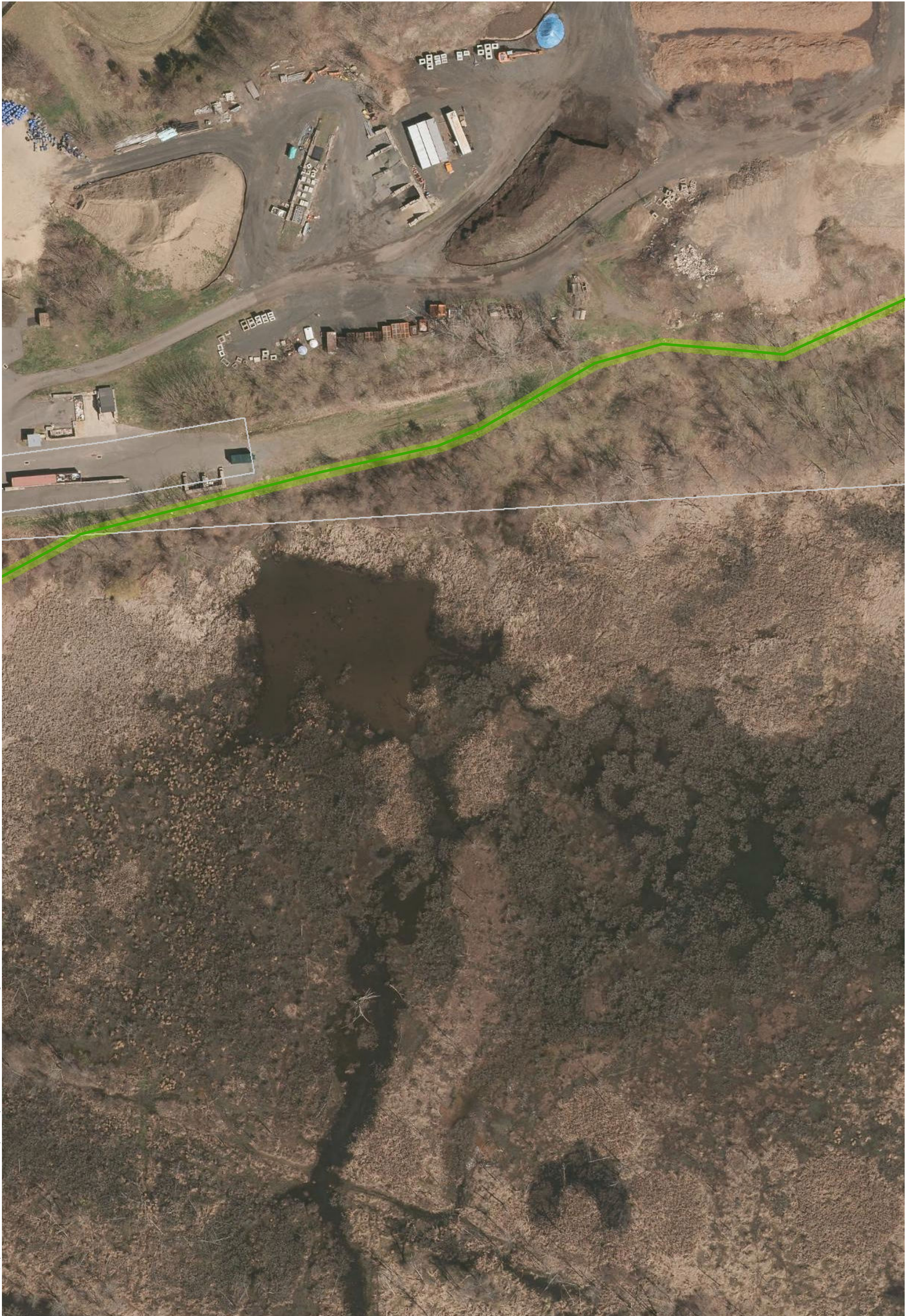


Gap Closure Trail Study | Hartford County, CT

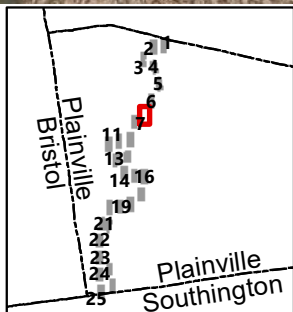
Alignment C - 5.3 Miles

Disclaimer: The alignment shown is preliminary and for planning purposes only. Alignments are subject to change as the planning study progresses. Parcel lines have not been field verified.





- ↑ 0 25 50 100 Feet
- Alignment C - 5.3 Miles - 98% Off Road
  - Alignment C Alternatives
  - 10-12' Bituminous multi-use trail
  - Railroad



Gap Closure Trail Study | Hartford County, CT

Alignment C - 5.3 Miles

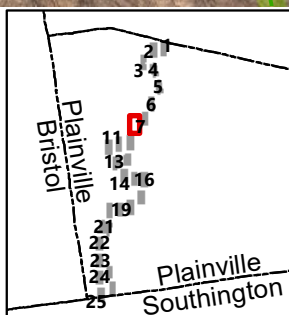
Disclaimer: The alignment shown is preliminary and for planning purposes only. Alignments are subject to change as the planning study progresses. Parcel lines have not been field verified.





- Alignment C - 5.3 Miles - 98% Off Road
- Alignment C Alternatives
- 10-12' Bituminous multi-use trail
- Railroad

Disclaimer: The alignment shown is preliminary and for planning purposes only. Alignments are subject to change as the planning study progresses. Parcel lines have not been field verified.

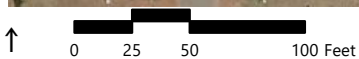


Gap Closure Trail Study

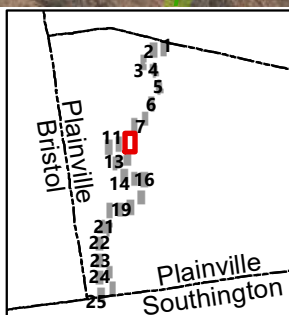
Hartford County, CT

Alignment C - 5.3 Miles





- Alignment C - 5.3 Miles - 98% Off Road
- Alignment C Alternatives
- 10-12' Bituminous multi-use trail
- Railroad



Gap Closure Trail Study

Hartford County, CT

Alignment C - 5.3 Miles

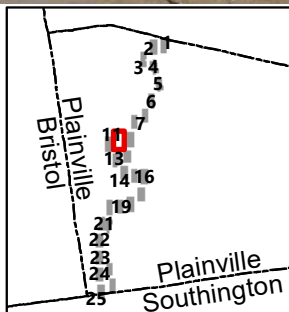
Disclaimer: The alignment shown is preliminary and for planning purposes only. Alignments are subject to change as the planning study progresses. Parcel lines have not been field verified.





0 25 50 100 Feet

- Alignment C - 5.3 Miles - 98% Off Road
- Alignment C Alternatives
- 10-12' Bituminous multi-use trail
- Railroad



Gap Closure Trail Study | Hartford County, CT

Alignment C - 5.3 Miles

Disclaimer: The alignment shown is preliminary and for planning purposes only. Alignments are subject to change as the planning study progresses. Parcel lines have not been field verified.

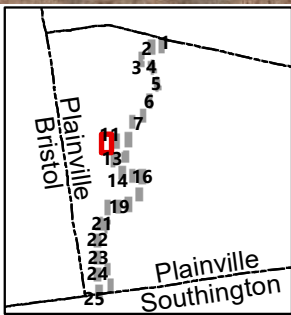




0 25 50 100 Feet

- Alignment C - 5.3 Miles - 98% Off Road
- Alignment C Alternatives
- 10-12' Bituminous multi-use trail
- Railroad

Disclaimer: The alignment shown is preliminary and for planning purposes only. Alignments are subject to change as the planning study progresses. Parcel lines have not been field verified.



Gap Closure Trail Study | Hartford County, CT

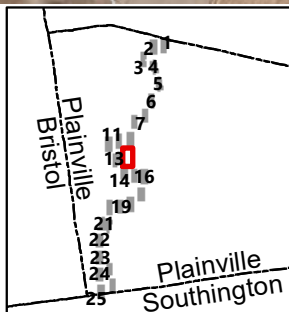
Alignment C - 5.3 Miles





↑ 0 25 50 100 Feet

- Alignment C - 5.3 Miles - 98% Off Road
- Alignment C Alternatives
- 10-12' Bituminous multi-use trail
- Railroad



Gap Closure Trail Study

Hartford County, CT

Alignment C - 5.3 Miles

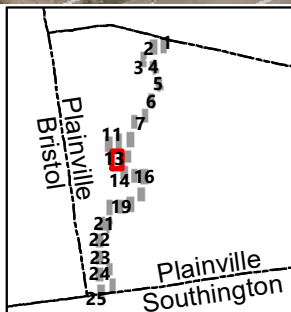
Disclaimer: The alignment shown is preliminary and for planning purposes only. Alignments are subject to change as the planning study progresses. Parcel lines have not been field verified.





0 25 50 100 Feet

- Alignment C - 5.3 Miles - 98% Off Road
- Alignment C Alternatives
- 10-12' Bituminous multi-use trail
- Railroad



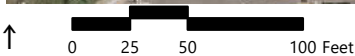
Gap Closure Trail Study

Hartford County, CT

Alignment C - 5.3 Miles

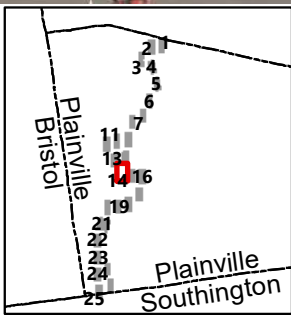
Disclaimer: The alignment shown is preliminary and for planning purposes only. Alignments are subject to change as the planning study progresses. Parcel lines have not been field verified.





- Alignment C - 5.3 Miles - 98% Off Road
- Alignment C Alternatives
- 10-12' Bituminous multi-use trail
- Railroad

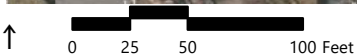
Disclaimer: The alignment shown is preliminary and for planning purposes only. Alignments are subject to change as the planning study progresses. Parcel lines have not been field verified.



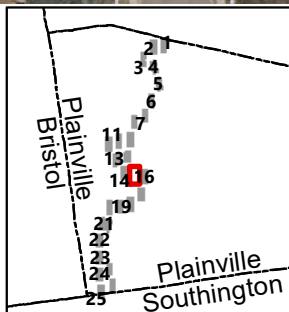
Gap Closure Trail Study | Hartford County, CT

Alignment C - 5.3 Miles





- Alignment C - 5.3 Miles - 98% Off Road
- Alignment C Alternatives
- 10-12' Bituminous multi-use trail
- Railroad



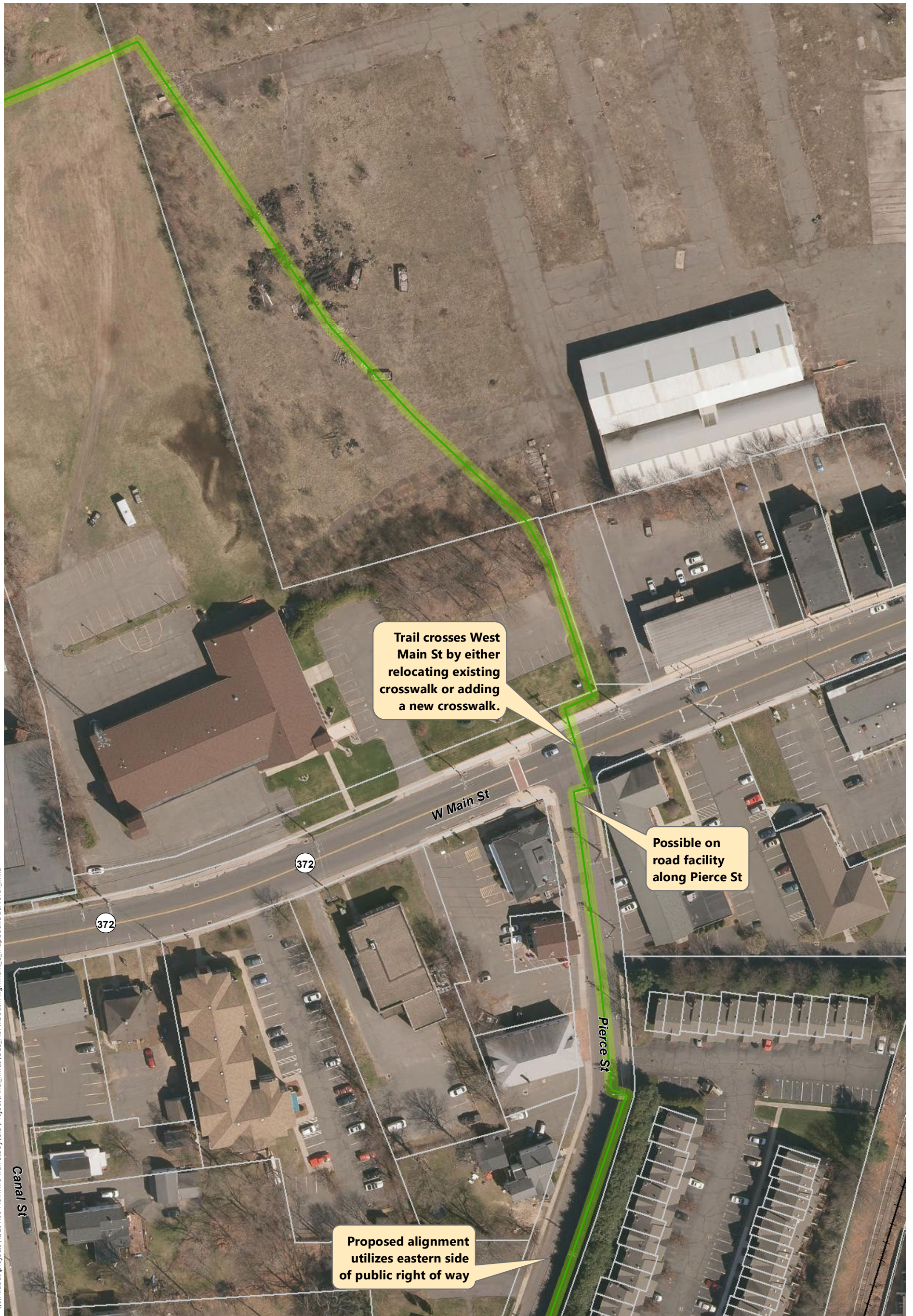
Gap Closure Trail Study

Hartford County, CT

Alignment C - 5.3 Miles

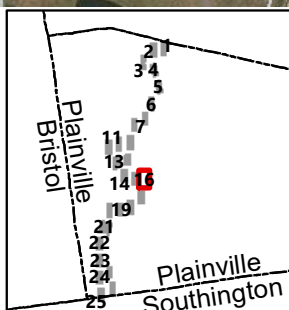
Disclaimer: The alignment shown is preliminary and for planning purposes only. Alignments are subject to change as the planning study progresses. Parcel lines have not been field verified.





↑ 0 25 50 100 Feet

- Alignment C - 5.3 Miles - 98% Off Road
- - - Alignment C Alternatives
- 10-12' Bituminous multi-use trail
- Railroad



Gap Closure Trail Study

Hartford County, CT

**Alignment C - 5.3 Miles**

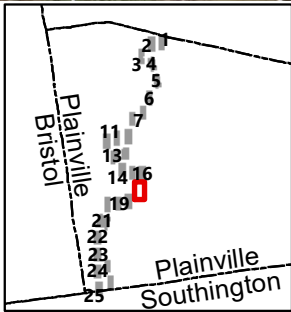
**Disclaimer:** The alignment shown is preliminary and for planning purposes only. Alignments are subject to change as the planning study progresses. Parcel lines have not been field verified.





- ↑ 0 25 50 100 Feet
- Alignment C - 5.3 Miles - 98% Off Road
  - Alignment C Alternatives
  - 10-12' Bituminous multi-use trail
  - Railroad

Disclaimer: The alignment shown is preliminary and for planning purposes only. Alignments are subject to change as the planning study progresses. Parcel lines have not been field verified.



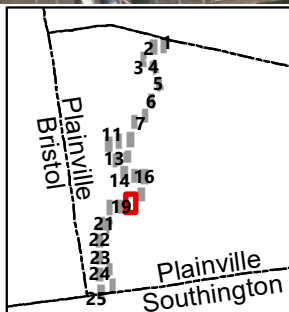
Gap Closure Trail Study | Hartford County, CT

Alignment C - 5.3 Miles





- ↑ 0 25 50 100 Feet
- Alignment C - 5.3 Miles - 98% Off Road
  - Alignment C Alternatives
  - 10-12' Bituminous multi-use trail
  - Railroad



Gap Closure Trail Study

Hartford County, CT

Alignment C - 5.3 Miles

Disclaimer: The alignment shown is preliminary and for planning purposes only. Alignments are subject to change as the planning study progresses. Parcel lines have not been field verified.



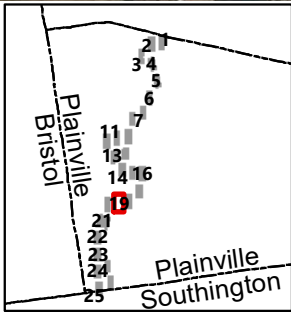


Alternative alignment  
utilizes the public  
right-of-way on West  
Pearl St & Willis Av

0 25 50 100 Feet

- Alignment C - 5.3 Miles - 98% Off Road
- Alignment C Alternatives
- 10-12' Bituminous multi-use trail
- Railroad

Disclaimer: The alignment shown is preliminary and for planning purposes only. Alignments are subject to change as the planning study progresses. Parcel lines have not been field verified.



Gap Closure Trail Study | Hartford County, CT

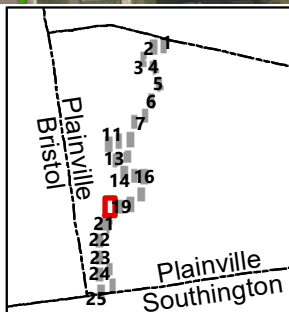
Alignment C - 5.3 Miles





0 25 50 100 Feet

- Alignment C - 5.3 Miles - 98% Off Road
- Alignment C Alternatives
- 10-12' Bituminous multi-use trail
- Railroad



Gap Closure Trail Study

Hartford County, CT

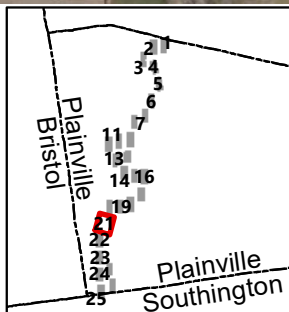
Alignment C - 5.3 Miles

Disclaimer: The alignment shown is preliminary and for planning purposes only. Alignments are subject to change as the planning study progresses. Parcel lines have not been field verified.





- ↑ 0 30 60 120 Feet
- Alignment C - 5.3 Miles - 98% Off Road
  - Alignment C Alternatives
  - 10-12' Bituminous multi-use trail
  - Railroad

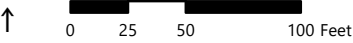


Gap Closure Trail Study | Hartford County, CT

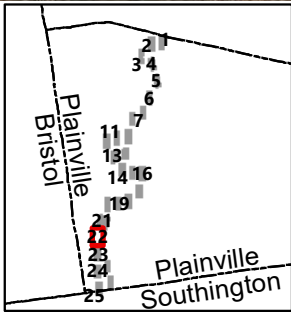
Alignment C - 5.3 Miles

Disclaimer: The alignment shown is preliminary and for planning purposes only. Alignments are subject to change as the planning study progresses. Parcel lines have not been field verified.





- Alignment C - 5.3 Miles - 98% Off Road
- Alignment C Alternatives
- 10-12' Bituminous multi-use trail
- Railroad

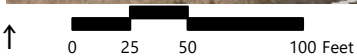
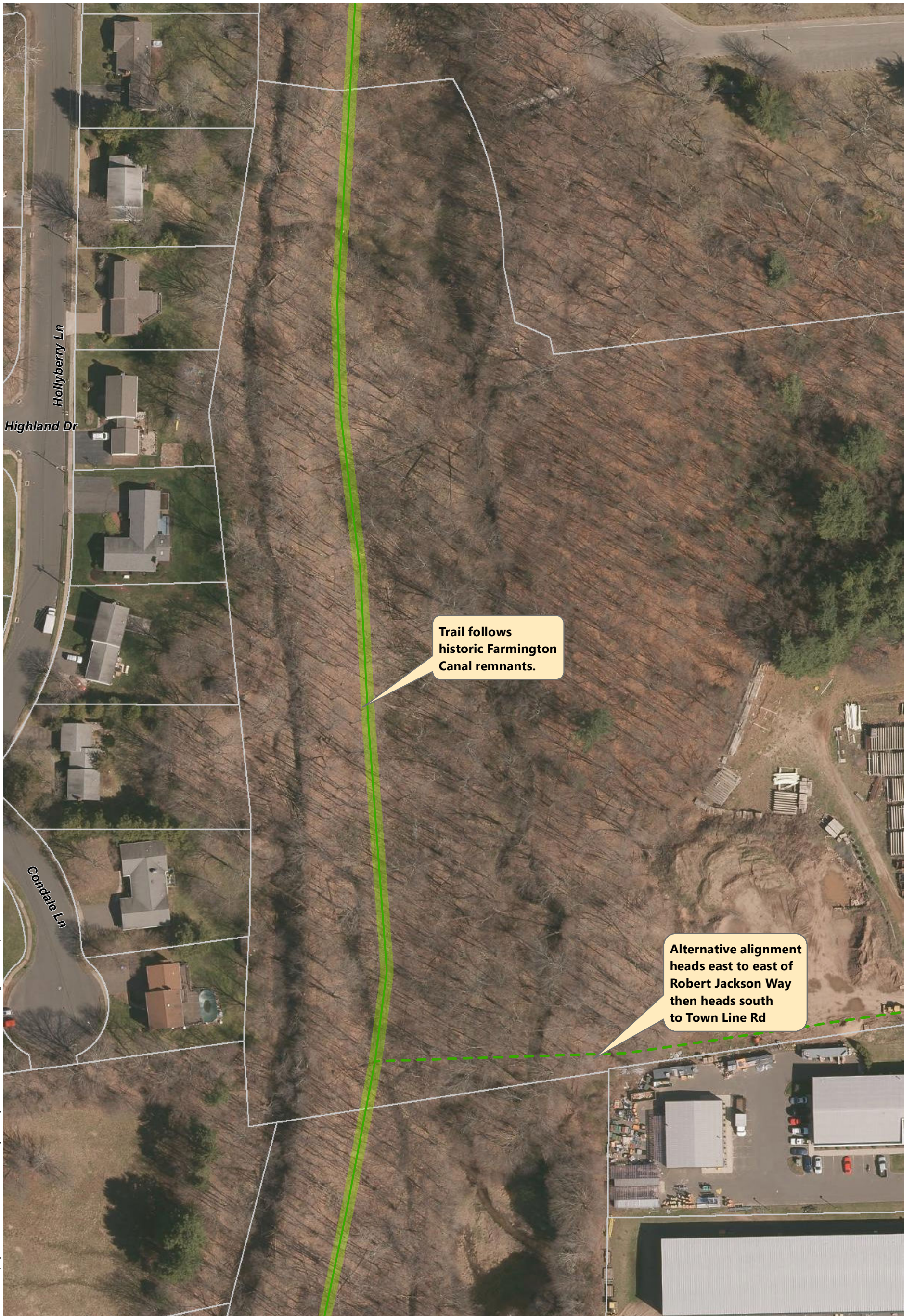


Gap Closure Trail Study | Hartford County, CT

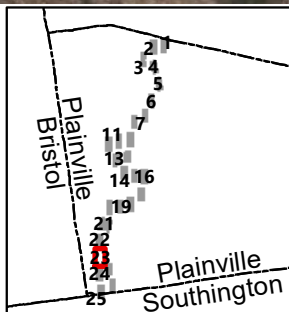
Alignment C - 5.3 Miles

Disclaimer: The alignment shown is preliminary and for planning purposes only. Alignments are subject to change as the planning study progresses. Parcel lines have not been field verified.





- Alignment C - 5.3 Miles - 98% Off Road
- Alignment C Alternatives
- 10-12' Bituminous multi-use trail
- Railroad



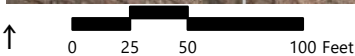
Gap Closure Trail Study

Hartford County, CT

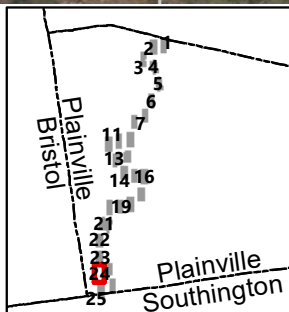
Alignment C - 5.3 Miles

Disclaimer: The alignment shown is preliminary and for planning purposes only. Alignments are subject to change as the planning study progresses. Parcel lines have not been field verified.





- Alignment C - 5.3 Miles - 98% Off Road
- Alignment C Alternatives
- 10-12' Bituminous multi-use trail
- Railroad



Disclaimer: The alignment shown is preliminary and for planning purposes only. Alignments are subject to change as the planning study progresses. Parcel lines have not been field verified.

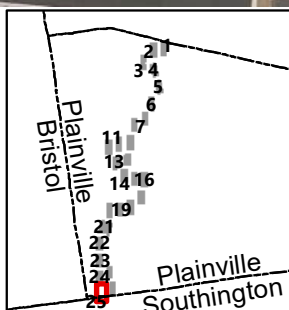




\\cmiddat\projects\42201.00 Plainville Trail Study\GIS\Project\Final\_mxd\GCS\_NorthSouthAlignment\_C\_Mapbook\DueNorth\_.mxd

0 25 50 100 Feet

- Alignment C - 5.3 Miles - 98% Off Road
- Alignment C Alternatives
- 10-12' Bituminous multi-use trail
- Railroad



Gap Closure Trail Study

Hartford County, CT

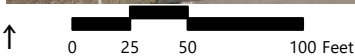
Alignment C - 5.3 Miles

Disclaimer: The alignment shown is preliminary and for planning purposes only. Alignments are subject to change as the planning study progresses. Parcel lines have not been field verified.

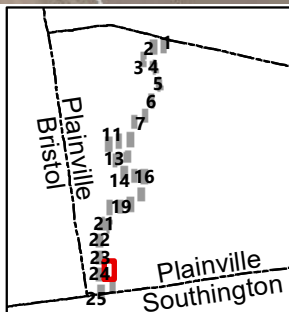




Alternative alignment  
heads east to east of  
Robert Jackson Way  
then heads south  
to Town Line Rd



- Alignment C - 5.3 Miles - 98% Off Road
- Alignment C Alternatives
- 10-12' Bituminous multi-use trail
- Railroad



Gap Closure Trail Study | Hartford County, CT

Alignment C - 5.3 Miles

Disclaimer: The alignment shown is preliminary and for planning purposes only. Alignments are subject to change as the planning study progresses. Parcel lines have not been field verified.

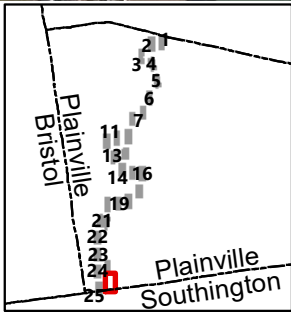




0 25 50 100 Feet

- Alignment C - 5.3 Miles - 98% Off Road
- Alignment C Alternatives
- 10-12' Bituminous multi-use trail
- Railroad

Disclaimer: The alignment shown is preliminary and for planning purposes only. Alignments are subject to change as the planning study progresses. Parcel lines have not been field verified.



Gap Closure Trail Study | Hartford County, CT

Alignment C - 5.3 Miles