



Farmington Canal Heritage Trail Gap Closure and CTfastrak Connection

January 29, 2019 Public Meeting

Agenda for Tonight's Presentation

- Brief Overview of the Project
- Overview of the Final Report
 - What it covers
 - Background
 - Review of the preferred alignment
- Next Steps



Purpose of Tonight's Meeting

Tonight's meeting we present you the **preferred alternative** for connecting the CT *fastrak* station to the Farmington Canal Heritage Trail and, and ask for feedback on **the alignment** before the project moves forward into the next phase.





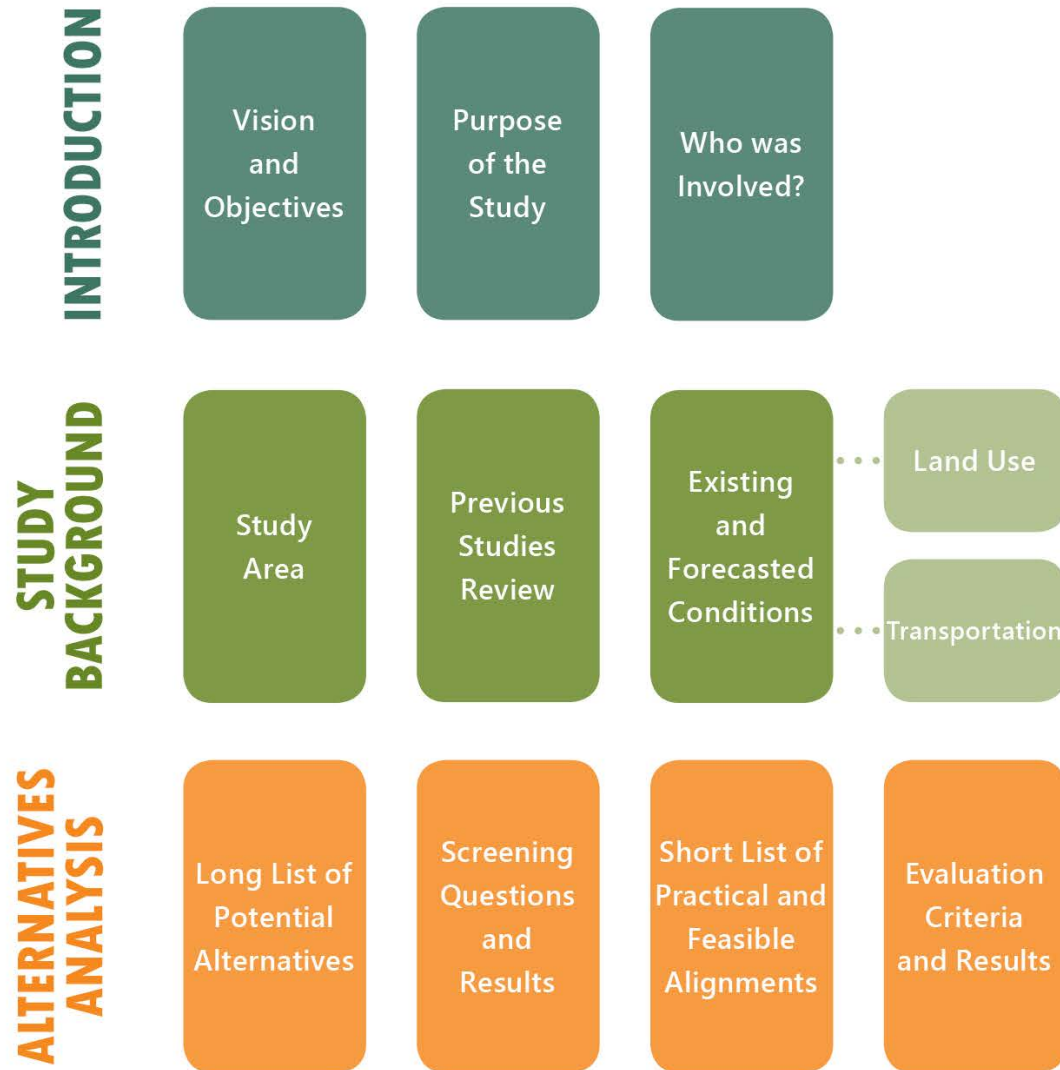
Brief Project Overview

Vision Statement

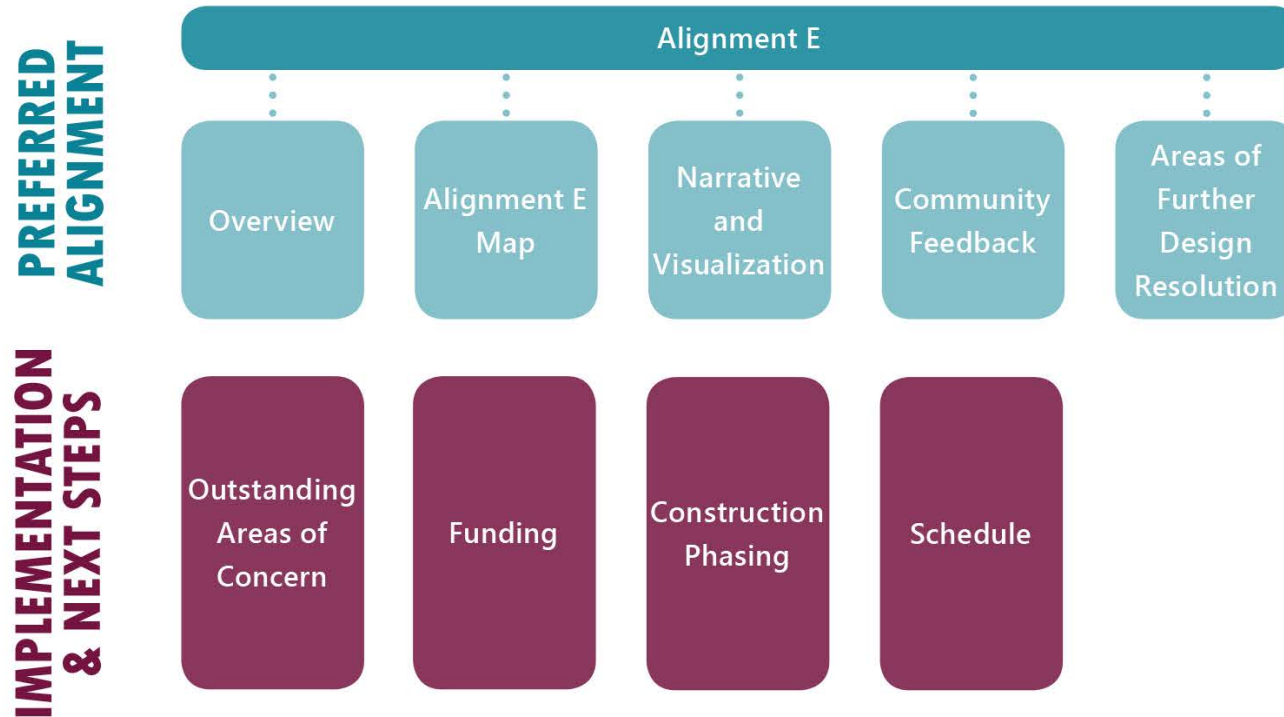
"The vision for the Farmington Canal Heritage Trail Gap Closure and CT**fastrak** Connection Study is to connect the communities with a **world-class multi-use trail** that closes the gap in the Farmington Canal Heritage Trail (FCHT) through the towns of Southington and Plainville with a connection to the CT**fastrak** station in downtown New Britain. These links will **prioritize safety, comfort, and mobility for all users, regardless of age or ability**, through cohesive and attractive trails that promote economic and community vitality."



Final Report Organization



Final Report Organization





Walk Through of Alignment E

Overview of Alignment E



Overview of Alignment E



Overview of Alignment E

2 Central Section



Approximate end of
potential Town road diet

Anticipated box culvert
under Crooked Street

Approximate start of
potential Town road diet

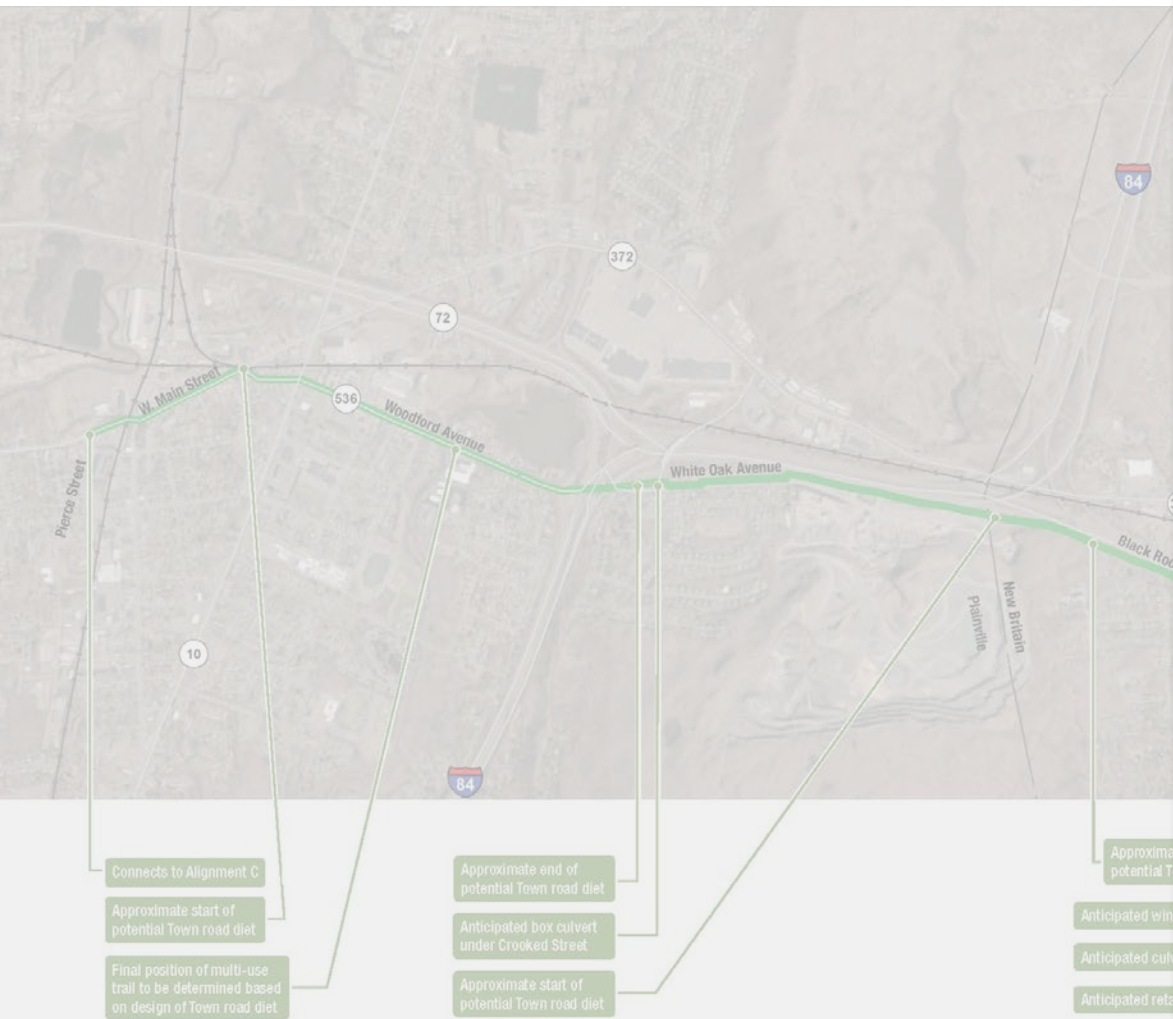
Approximate end of
potential Town road diet

Anticipated wing wall modification

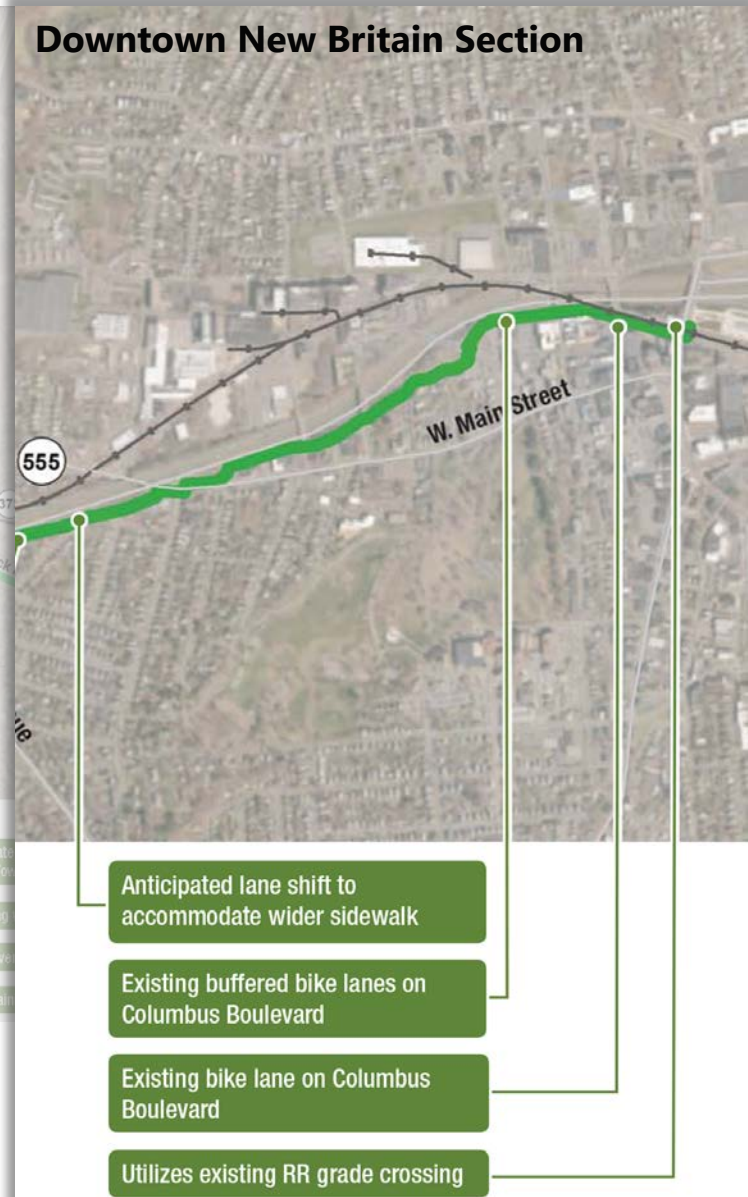
Anticipated culvert extension

Anticipated retaining walls

Overview of Alignment E



Downtown New Britain Section



Overview of Alignment E

- Alignment E is proposed to be:
 - 4.91 miles in length
 - Between 10' and 12' in width
 - Bituminous Concrete
 - 92% off-road multi-use trail
- We will continue to refine Alignment E based on comments received.

Woodford Avenue Road Diet



EXISTING CONDITIONS

Woodford Avenue

Plainville, Connecticut



Street View · Sep 2016

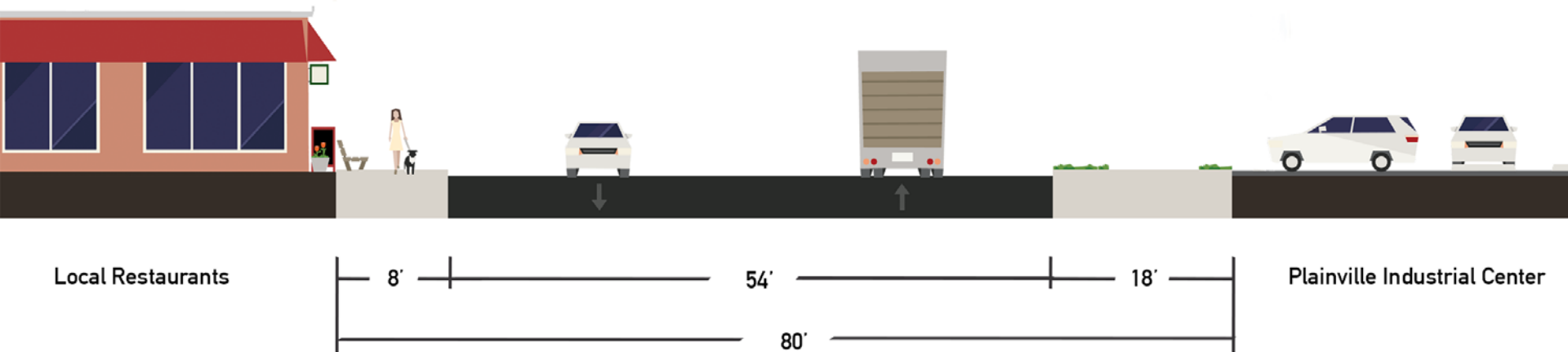


Google

Image capture: Sep 2016 © 2017 Google Denmark Terms Report a problem

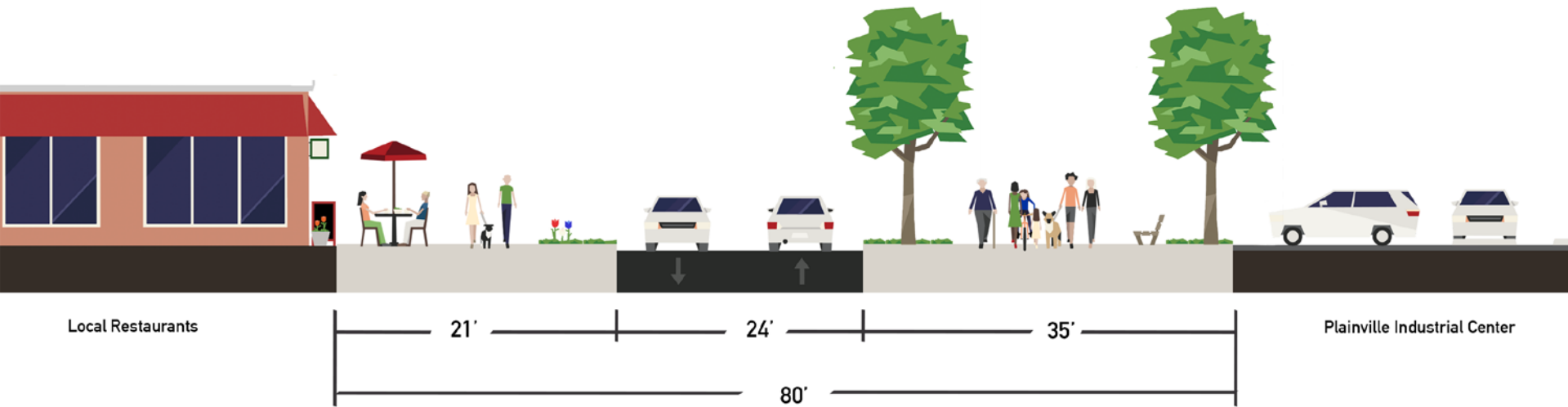
EXISTING CONDITIONS

Woodford Avenue



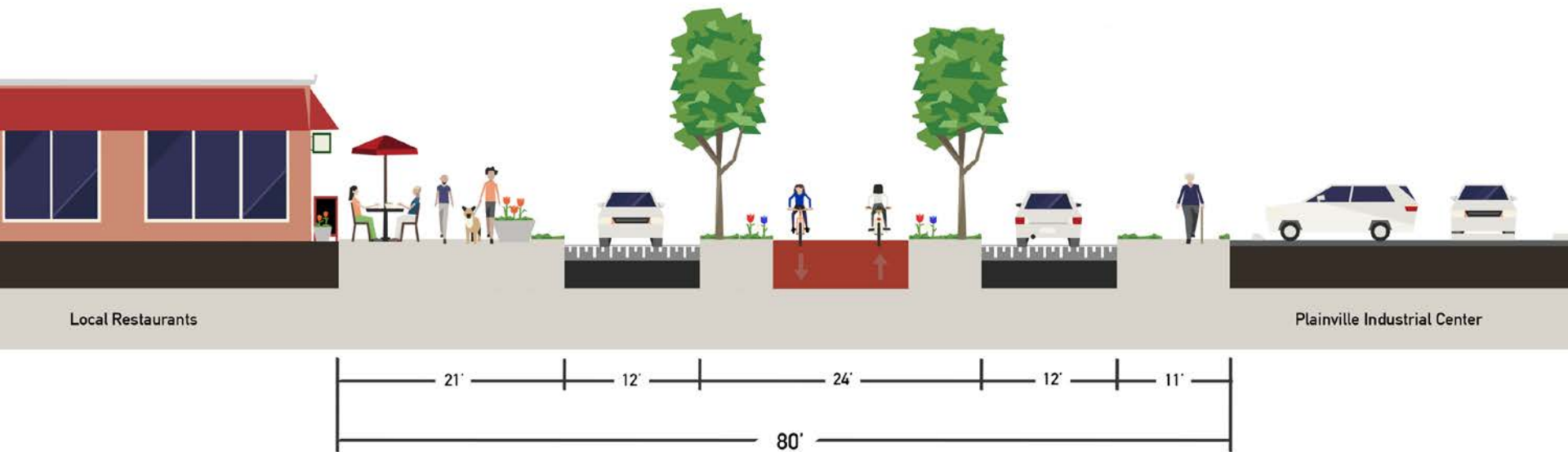
AFTER

Woodford Avenue



AFTER

Woodford Avenue



Corbin Avenue Trail Improvement



EXISTING CONDITIONS

Corbin Avenue



AFTER

Corbin Avenue



Curtis Street Trail Crossing



EXISTING CONDITIONS

Curtis Street



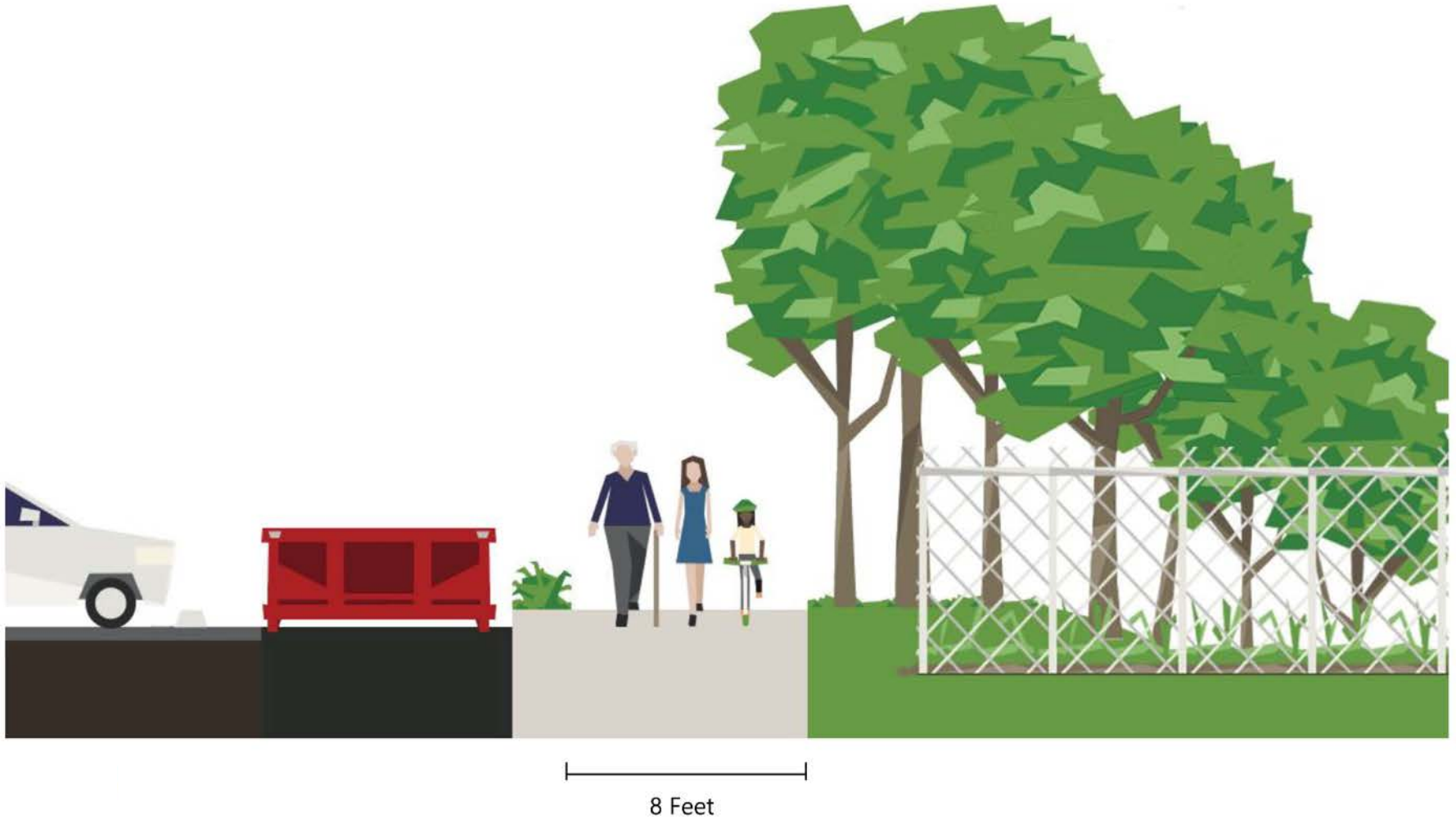
EXISTING CONDITIONS

Curtis Street



AFTER

Curtis Street



Columbus Boulevard



Columbus Boulevard



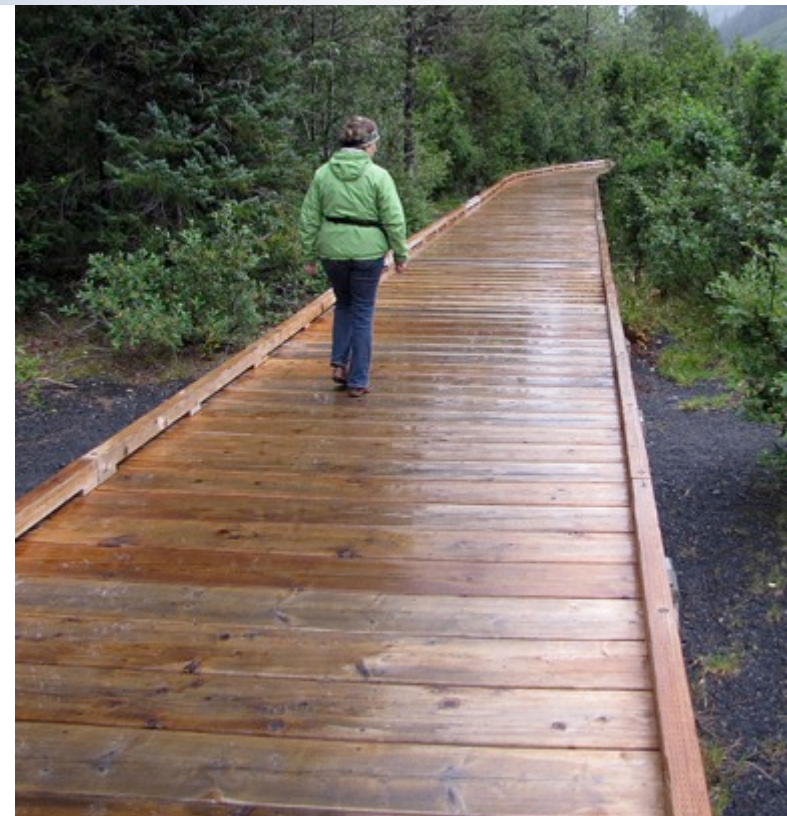
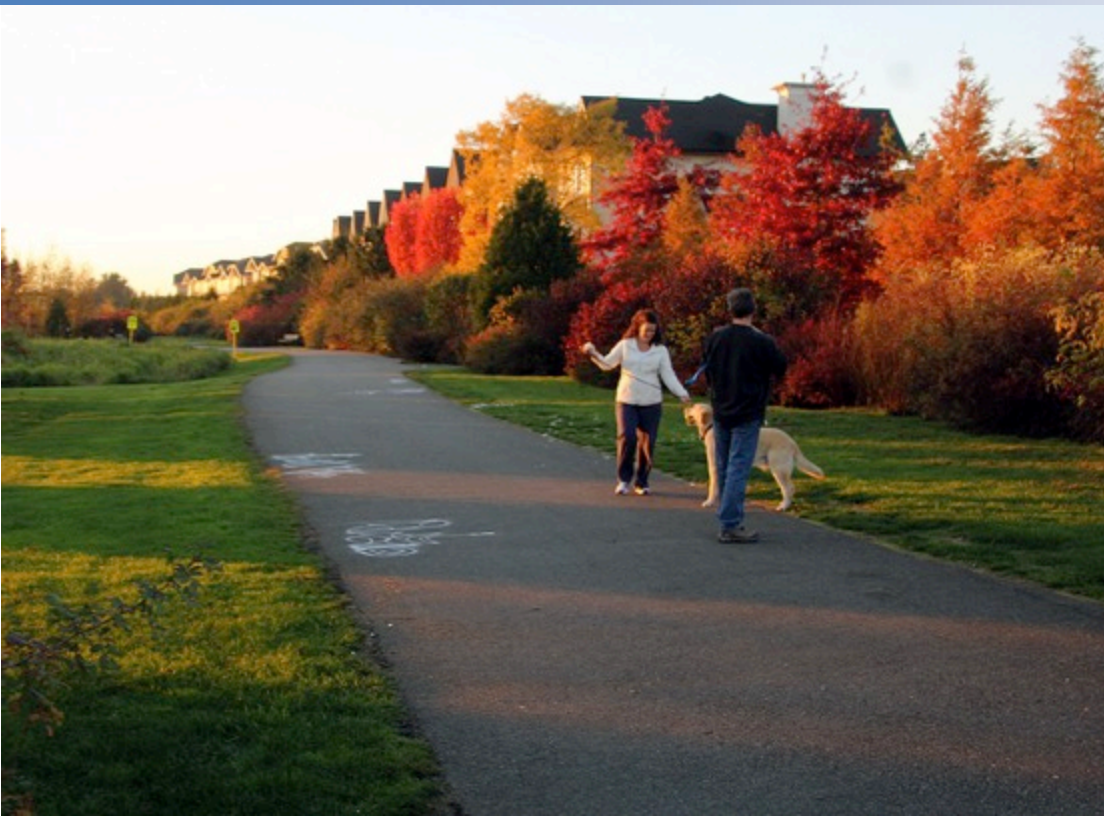
Figure 1. Plan View of the Columbus Boulevard Multi-Use Trail and Connecting Bike Lanes



Facility Typologies: off road, shared path, on street



Fully off Road





Separated Side Path





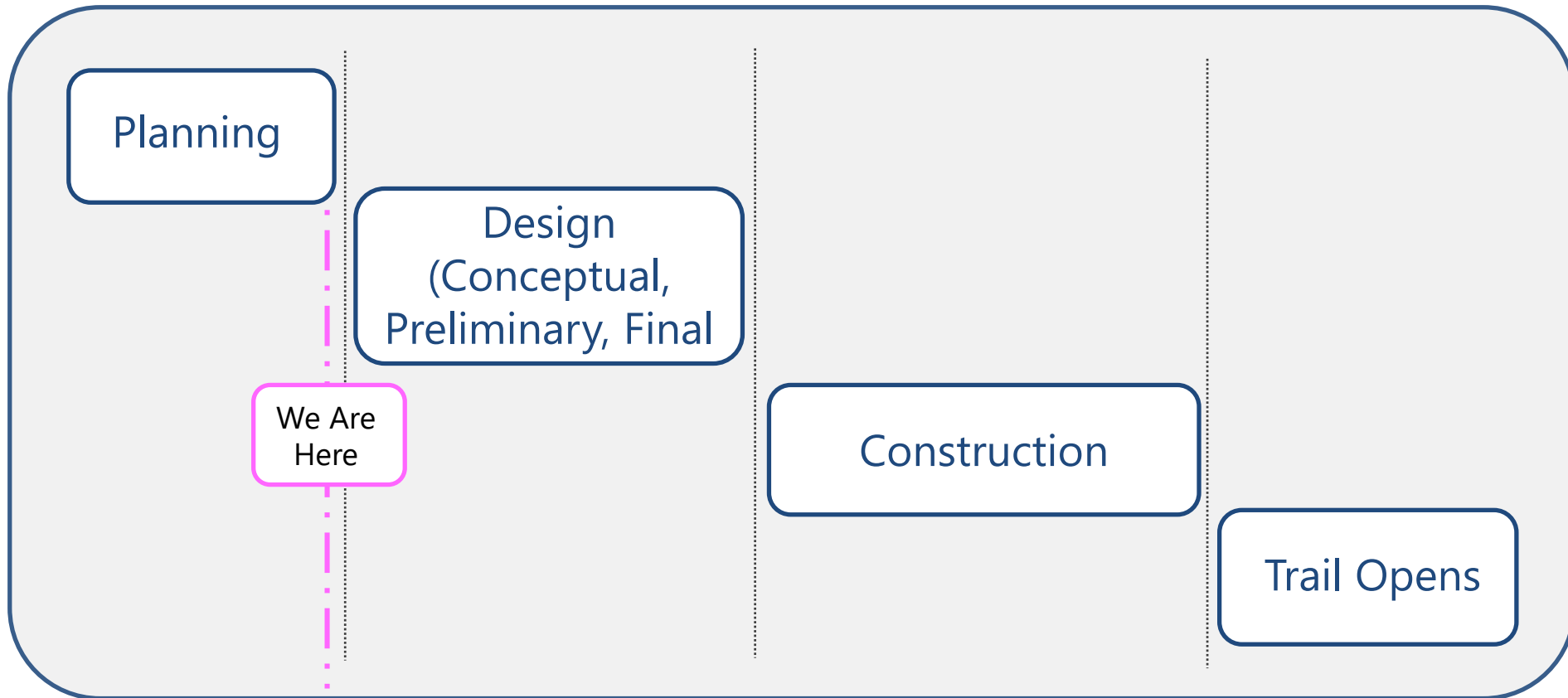
On-street Greenways





Next Steps

This Project is in the Planning Phase



What Happens Next

- All alignments are preliminary
- assumptions might change as the project moves through design!
- After reviewing your feedback, New Britain City Council will consider adoption of the Plan, and the Capitol Region Council of Governments will consider acceptance of the Plan.
- If these actions are completed, the City and CTDOT could move it into the design phase
- It is possible that part of an alignment will be on road in the short term while longer term funding is identified



Tim Malone | Capitol Region Council of Governments

Project Manager | tmalone@crcog.org | 860.724.4221



www.gapclosurestudy.com