



GAP
CLOSURE TRAIL STUDY
Farmington Canal Greenway Trail Study

Farmington Canal Heritage Trail Gap Closure and CT *fastrak* Study

CRCOG, Plainville, Southington and New Britain

Public Informational Meeting July 26, 2016

vhb | **MOBYCON** | **CORCORAN GROUP** | **BAKER PERKINS**

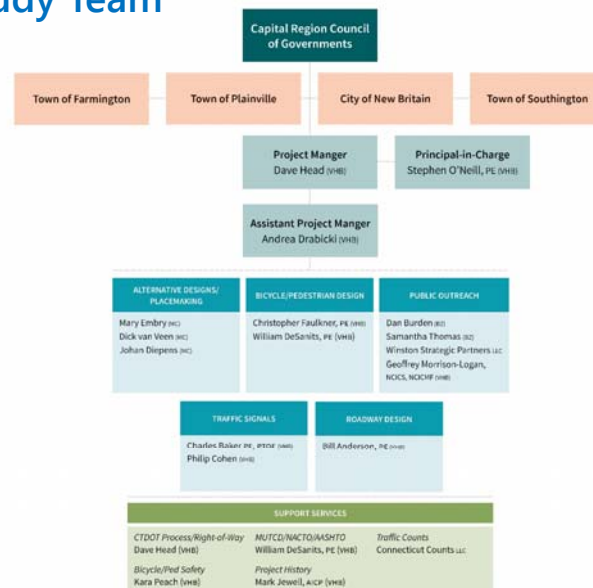


Purpose of Meeting

- Welcome
- Vision Statement and Objectives of the Study
- What is the study
- How to participate / Provide your input
- Next steps
- Questions



Study Team



Key Stakeholders

- General Public
- CRCOG
- Plainville
- Southington
- New Britain
- Farmington
- East Coast Greenway Alliance
- Farmington Valley Trails Council
- Plainville Greenway Alliance
- CTDOT
- CTfastrak

Objectives of the Study

1. Close the Gap in the Farmington Canal Heritage Trail through Southington and Plainville
2. Identify a connection to the CTfastrak station in downtown New Britain



Vision Statement

"The vision for the Farmington Canal Heritage Trail and CTfastrak Gap Closure study is to connect the communities with a world-class multi-use trail that closes the gap in the Farmington Canal Heritage Trail (FCHT) through the towns of Southington and Plainville with a connection to the CT**fastrak** station in downtown New Britain. These links will prioritize safety, comfort, and mobility for all users, regardless of age or ability, through cohesive and attractive trails that promote economic and community vitality."

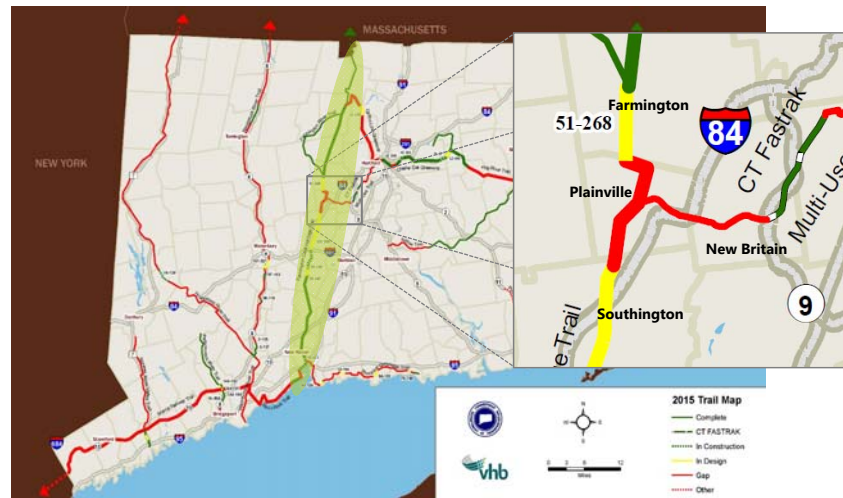
A Little History

- Farmington Canal Heritage Trail
 - 84 mile multi-use trail from New Haven, CT to Northampton, MA
 - Only Gap not in either design or construction is in Plainville / Southington

Farmington Canal Heritage Trail

Suffield	1.2	1.2	0		100	
Granby	1.1	1.1	0		100	
East Granby	5.3	5.3	0		100	
Simsbury	7.5	7.5	0		100	
Avon	4.7	4.7	0		100	
Farmington	4.8	2.3	2.5	2.5	48	\$5.1m
Plainville	4.3	0	4.3	0	0	Yes, plan
Southington	6.6	4.0	2.6	2.6	61	
Cheshire	7.1	3.9	3.2	2.5	55	Yes
Hamden	9.5	9.5	0		100	
New Haven	3.4	1.8	1.6	1.6	47	Yes
Total (CT)	55.5	40.3	14.2	7.2	73%	
TOTAL	80.2	56.2	22.9	10.1	70%	

Farmington Canal Heritage Trail



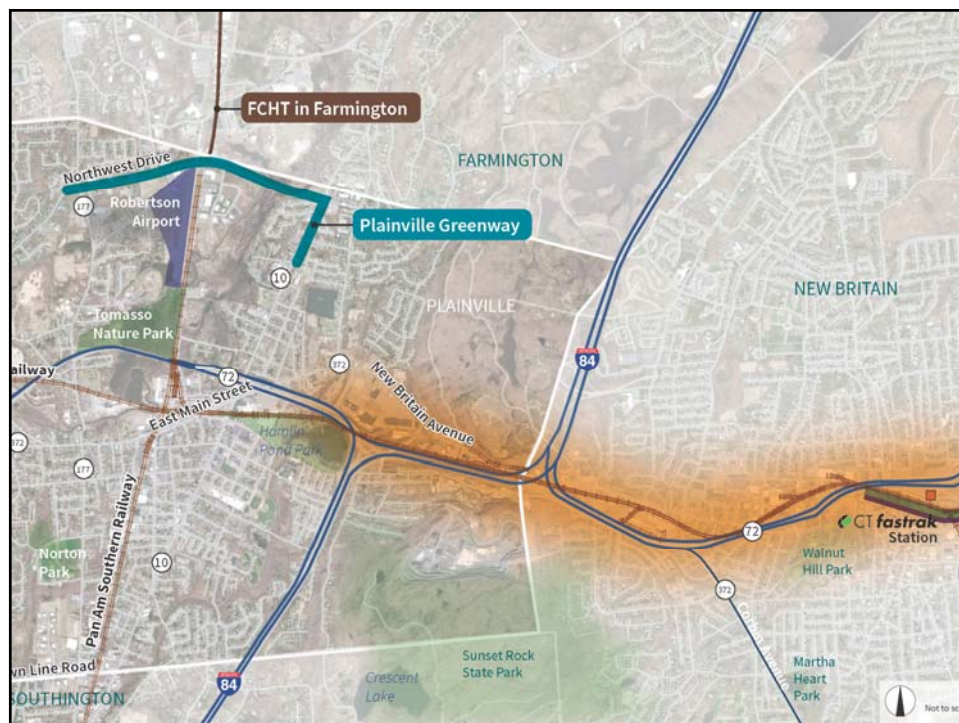
A Little History

- Part of The East Coast Greenway which is a national trail that runs from Key West, FL to Calais, ME.
 - 198 Miles are in CT
 - Of which, 60% are complete or in progress (109 Miles)



What is this Study?

- Study to determine corridor for closing the gap in FCHT
 - Plainville and Southington
- This has been studied before, has not progressed due to difficulty of Plainville section
 - Active Rail Line
- Connection from Plainville to the CTfastrak station in New Britain
 - Provide an alternate means for residents to access CTfastrak
- CRCOG, CTDOT and Towns want this trail completed (last in the corridor)
 - When complete the FCHT will traverse over 84 miles from New Haven, CT to Northampton, MA
 - It will serve both recreational users and commuters



Why is this Being Done?

- Need to have a defined alignment to access funds for design and construction
- This will allow the communities to define sections and plan for the project
- Allow the communities to plan for this development as other development comes into the community

Healthy Communities



***Now that we are here ...
What can we do?***





Values to Action

Gap Closure Trail Study
Dan Burden and Samantha Thomas
Blue Zones, LLC

Which focus of investment shown in the two panels to the right brings about the greatest good for a society?

Places for people, or places for cars?



Economics of Trail and Walkability Investments

- A 1 percent increase in walkability yielded \$1,329 increase in property values (CEO's of America (\$800 to \$1,400/point increase))
- Dollar for dollar spent on infrastructure building for walkability costs 1:24 of providing for the auto
- Building trails and sidewalks employs 7 times more people with jobs than money spent on other transportation infrastructure
- An average bicycle tourist leaves \$175/day behind in the community they visit

Two Ways To Grow

Portland, OR



Atlanta, GA



Property Taxes:

↓ 29%

↑ 22%

Air Pollution:

↓ 86%

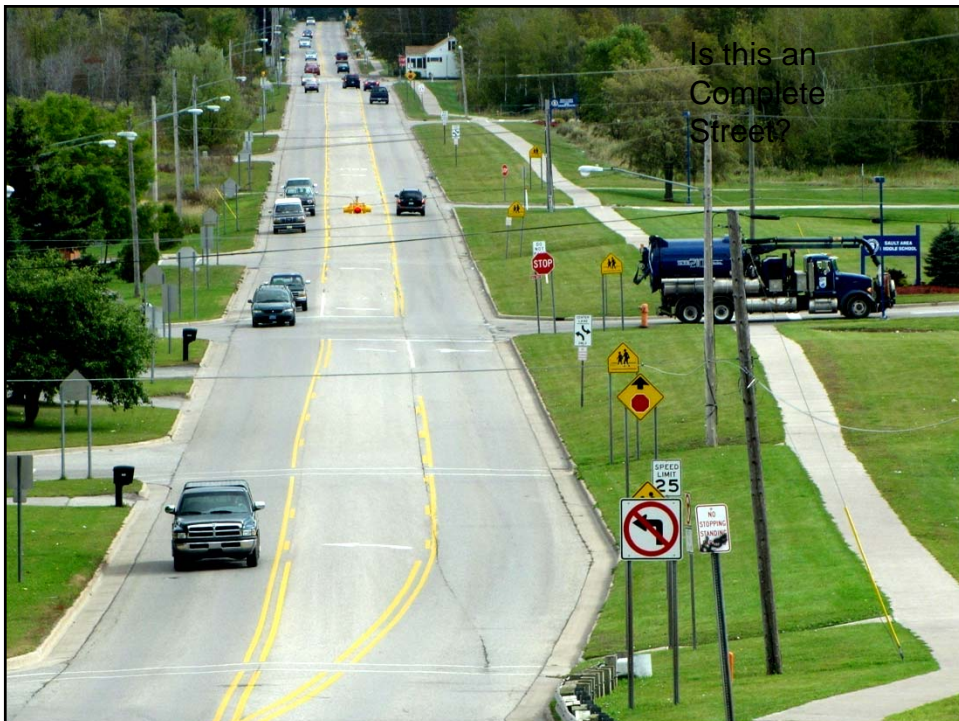
↑ 5%

Neighborhood Quality:

↑ 19%

↓ 11%

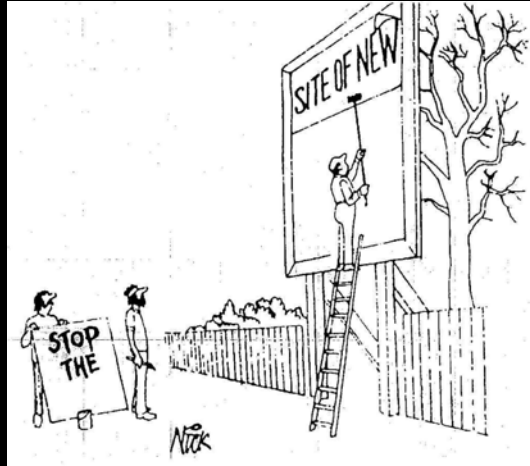




Many people are poised to oppose change.

Perhaps they lack trust, feel left out or unable to communicate or be heard.

The net result -- it is essential to improve public process if good projects are to go forward.



Aging In Place



Where would you rather walk? Why?



The street is the river of life of the city, the place where we come together, the pathway to the center.

William H. Whyte

Aging In Place

***Aging-in-place** means remaining in one's home safely, independently, and comfortably, regardless of age, income, or ability level. It means the pleasure of living in a familiar environment throughout one's maturing years, and the ability to enjoy the familiar daily rituals and the special events that enrich all our lives.*

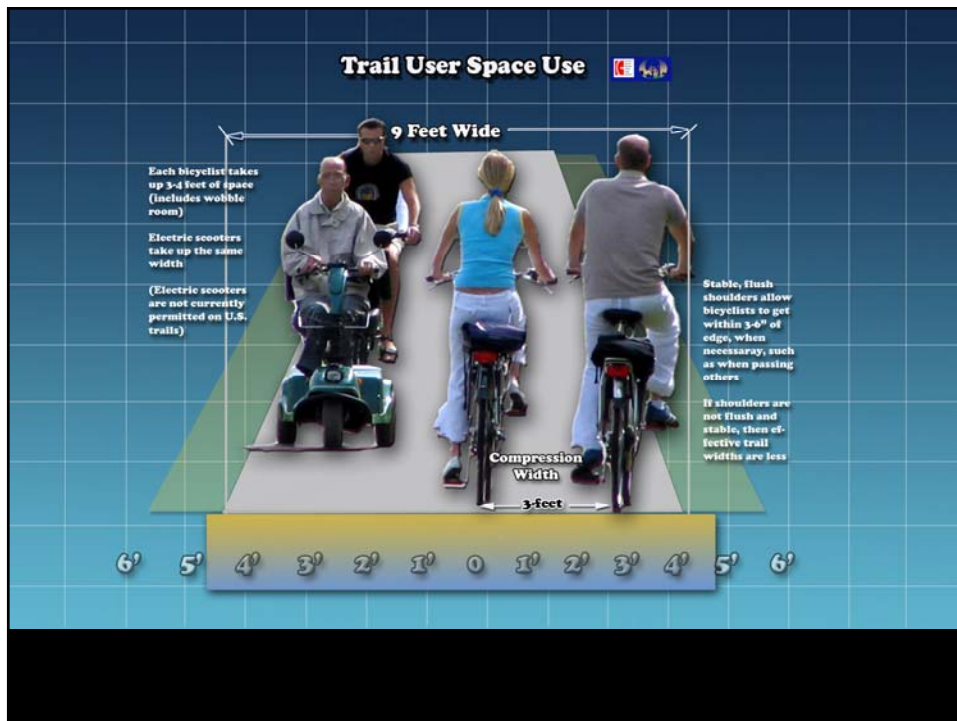
(National Association of Home Builders)



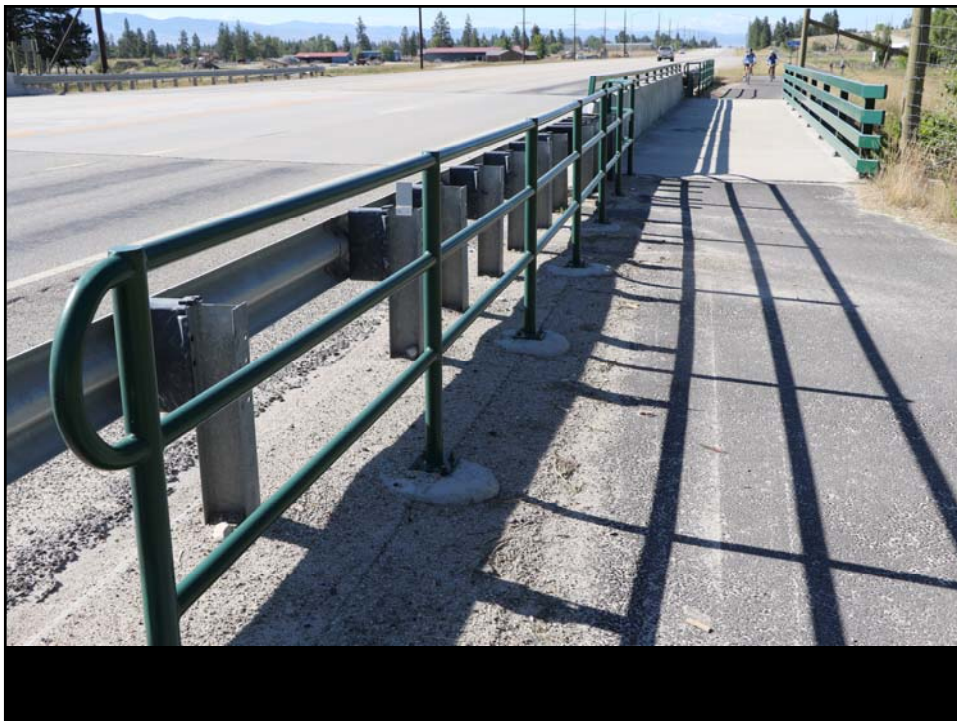
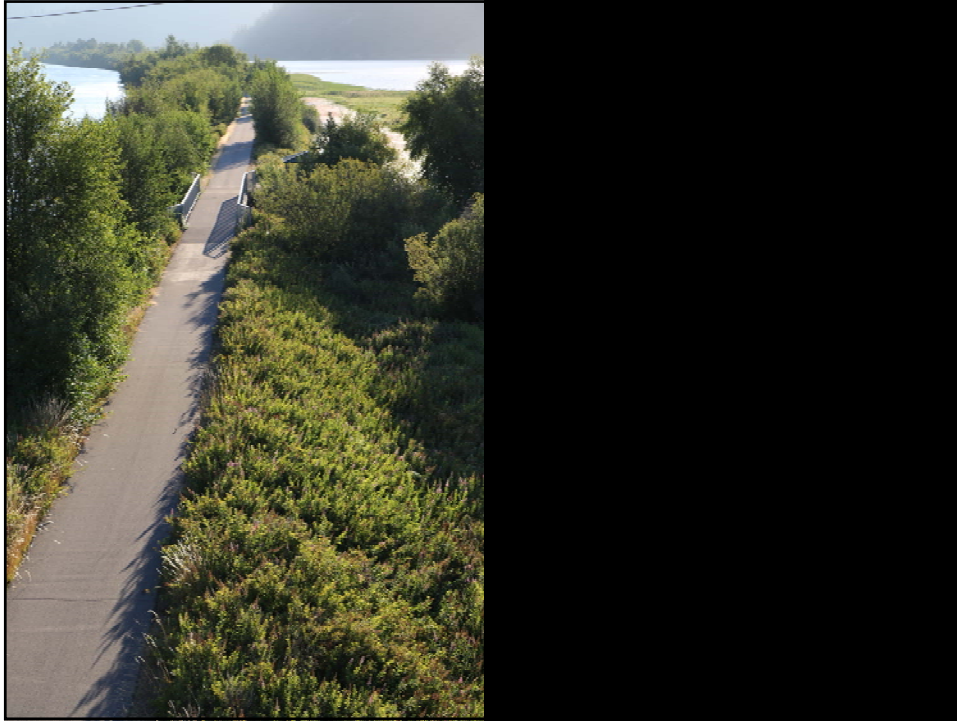
Fennelin Falls, Ontario

Create a Vision for Greenway Development

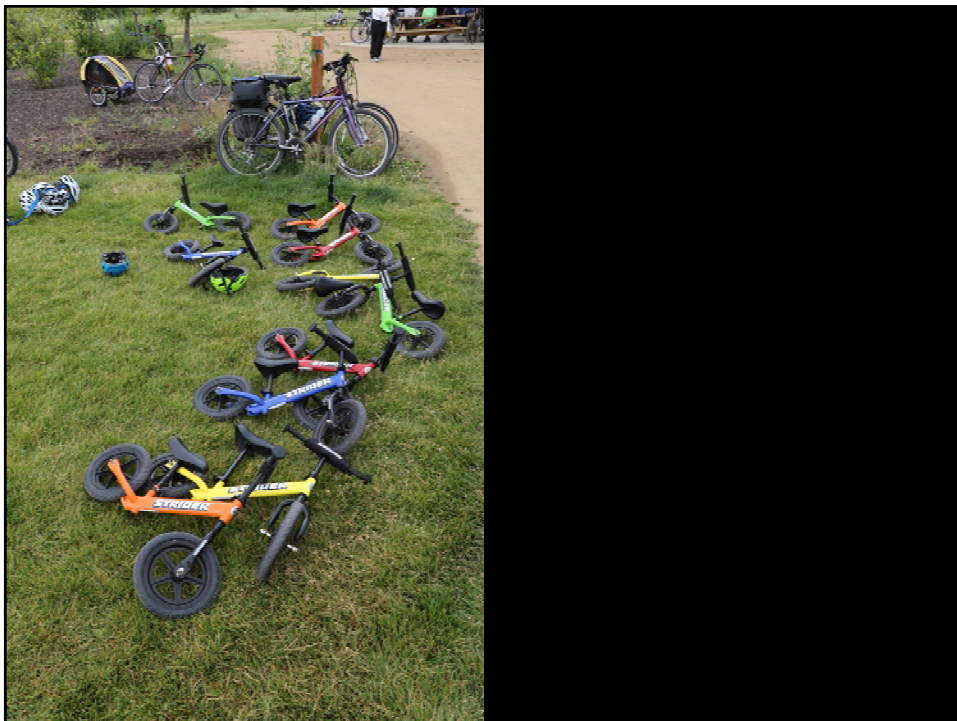
- **Recreation** (exercise, play, discovery, adventure)
- **Transportation Access** (school, work, errands, visiting)
- **Transportation Equity**
- **Health, wellness, fitness**
- **Tourism, economic development**
- **Social** (interaction, association, sharing)
- **Economic stability and growth**















Recreation

Each resident should have easy access to a recreation trail of at least 5 miles in length.



Transportation

Residents (including seniors and children) should be able to have a safe and enjoyable walk or bicycle ride to neighborhood schools, civic buildings, business areas, parks, transit stops and conservation areas.



Environmental Restoration/Enhancement

Corridors should be designed to include restoration or enhancement of native ecological systems as well as St Lucie's tree canopy - and provide opportunities for environmental education.



Social

The St Lucie County Greenways System should encourage social interaction within and between neighborhoods; create gathering places for social or recreational activities; and promote a sense of place for neighborhoods.



Tourism

Visitors should have access to a safe and enjoyable trail of at least 5 miles in length (or about a half-day experience), as well as access to bike rentals and other amenities.



Trails / Paths

- Surface (Paved or Unpaved)
- Storm Drainage
- Information Signs
- Historic Markers/Exhibits
- Bridges
- Emergency Telephones
- Bicycle Parking
- Event Banners
- Art/Sculpture
- Picnic/Seating Areas
- Crosswalks



Bike Lanes

Neighborhood Streets





Destinations

Trailheads Stations

- Signs
- Rest Rooms
- Picnic Pavilions
- Exhibits/Trail Maps
- Parking Lot
- Storm Drainage/Retention
- Landscaping / Buffers
- Walks
- Playground
- Bike Parking
- Bus Stop
- Site Furnishings

Scope of Work

- Project Management
- Public Engagement Program
- Data Collection / Base Map Creation
- Assessment of Existing Conditions
- Identification of Alternatives
- Implementation Plan
- Final Report

Public Engagement Plan

- Steering Committee (9)
- Technical Team (5)
- Discovery Phase
 - Focus Group Meetings (8)
 - Stakeholder Interviews (10)
 - Mobile Study Tours (2)
- Charrettes (2)
- Public Informational Meetings (4)
- Surveys (3)
- Town Meetings (10)
- Website – www.gapclosurestudy.com
- Newsletters (6)
- Translation Services

Schedule

		Gap Closure Study																		
		2016												2017						
		March	April	May	June	July	August	Sept	Oct	Nov	Dec	Jan	Feb	March	April	May	June	July	Aug	
Task 1	Project Management																			
Task 2	Community Involvement																			
Task 3	Data Collection and Base Maps																			
Task 4	Assessment of Existing Conditions																			
Task 5	Identification of Alternatives																			
Task 6	Implementation Plan for Preferred Alternative																			
Task 7	Final Report and Executive Summary																			
		Discovery Phase												Steering Committee Meeting						
		Project Kickoff Meeting												CRCDG committee meeting						
		Workshops / Charrettes												Deliverables						
		Technical Team Meeting																		
		Public Informational Meeting																		
		Town Council Meeting																		

C – Charrette
M – Mobile Tour
PIM – Public Informational Meeting

How to Participate?

- You're doing it now!
- Attend meetings
- Visit the Website for updates www.gapclosurestudy.com
- Take our survey – you can find it on the website
- Sign up for our interested parties mailing list
- Contact Tim Malone or myself
- Get others involved

Next Steps?

- Review what we hear today
- Continue to work with the Steering Committee
- Begin to look at alternatives for Closing the Gap in Plainville and New Britain
- Keep everyone updated through the website and e-mail blasts
- We will be back for Public Meetings in the Beginning of October

Upcoming Events

- Steering Committee Meeting – Early September
- Planning Charrette – October 3-6
- Public Informational Meeting – October 3

Dave Head | dhead@vhb.com | 860.807.4339

Andrea Drabicki | adrabicki@vhb.com | 860.807.4357

Mark Jewell, AICP | mjewell@vhb.com | 860.807.4326

Tim Malone | tmalone@crcog.org | 860.522.2217 Ext. 224

